

S.M.S.L



SA300

USER MANUAL

<http://www.smsl-audio.com/>

## TIPS

- Install this unit in a well ventilated, cool, dry, clean place-away from direct sunlight, heat sources, vibration, dust, moisture, or cold.
- On the top of this unit, do NOT place:
  - Other components, as they may cause damage or discoloration on the surface of this unit.
  - Combustible (i.e. candles) , as they may cause fire , damage to this unit , or personal injury.
  - Containers with liquid in them, as they may fall and the liquid may cause electrical shock to the user or damage to this unit.
- Do not cover this unit with a newspaper, tablecloth, curtain , etc. in order not to obstruct heat radiation. If the temperature inside this unit rises, it may cause fire, damage to this unit, or personal injury.
- Use the voltage specified on this unit Only. Using this unit with a higher voltage than specified is dangerous and may cause fire , damage to this unit, or personal injury. SMSL will not be held responsible for any damage resulting from the use of this unit with a voltage other than that specified.
- Do not attempt to modify or fix this unit by yourself. Contact qualified SMSL service personnel when anyservice is needed. The cabinet should never be opened for any reason.
- When not planning to use this unit for long periods of time (i.e. when going on vacation), disconnect the power cable from the AC wall outlet.
- For added protection for this product during a lightning storm, or when it is left unattended and unused for long periods of time, unplug it from the wall outlet. This will prevent damage to the product due to lightning and power-line surges.

**Specification**

Inputs .....	USB , RCA , BT
THD+N .....	0.008%
SNR .....	90dB
Channel separation .....	88dB
Output Power .....	80Wx2(4Ω) / 40Wx2(8Ω)
Power Consumption .....	35W(Normal Volume)
Standby power .....	<0.5W
Size .....	70x73x188mm (WxHxD)
Weight (In shipping carton).....	1.2kg

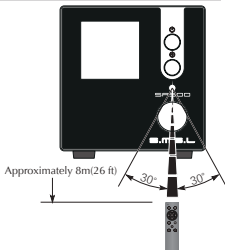
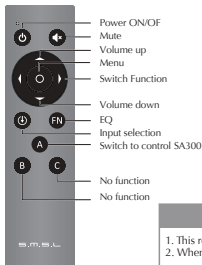
## Features

- German Infineon's new technology class D power amplifier chip, higher quality, efficiency up to 92%, further reducing power consumption;
- Using NJRC's electronic volume control chip NJW1194 from Japan, precise volume control and low distortion;
- 32 bits 384KHz USB audio input and support for driver-free use;
- Super bass preamp output for connecting active subwoofers to form a 2.1 audio system;
- Built-in multiple EQ modes and treble / bass adjustment for easy matching of a variety of speakers and music;
- Qualcomm Bluetooth 5.0 receiver, support APTX, better sound quality, longer transmission distance;
- All aluminum alloy CNC precision processing shell, anodizing technology and chamfering process, exquisite workmanship and delicate touch;
- LCD display and user-friendly operating system are simple and easy to understand, equipped with full-featured remote control function;
- Low power standby function to meet the latest European ErP2 standard;
- A large number of audio grade components are used to enhance the sound experience;
- High quality gold-plated input and output terminals;
- Perfect protection circuit for overheating, overcurrent, etc.
- High quality power adapter specially designed for audio.

## Remote Control

- Install 2 x AAA batteries as instructions
- When using the remote control, point it toward the remote control signal receiver on the main unit from a distance of 5 m (16 ft) or less. Do not place obstructions between the main unit and the remote control.
- The remote control might not work if the remote control signal receiver on the unit is exposed to direct sunlight or bright light. If this occurs, try moving the unit.  
Beware that use of this remote control could cause the unintentional operation of other devices that can be controlled by infra.

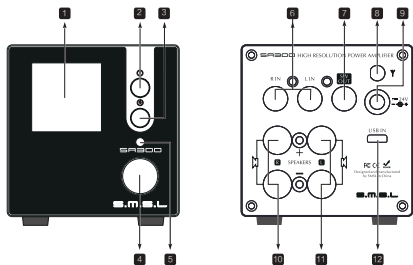
## Operating range of the remote control



### Note

1. This remote controller use 2 x R03/AAA batteries;
2. When you first operate SA300,press the A key first.

## Display Interface and Instructions



- |                                  |                                 |                                 |
|----------------------------------|---------------------------------|---------------------------------|
| <b>1</b> Display                 | <b>2</b> Power button           | <b>3</b> Input selection button |
| <b>4</b> Knob                    | <b>5</b> Remote window          | <b>6</b> LINE IN jacks          |
| <b>7</b> Subwoofer output        | <b>8</b> Bluetooth antenna*     | <b>9</b> Power input (DC 24V)   |
| <b>10</b> Right speaker output** | <b>11</b> Left speaker output** | <b>12</b> USB input             |

### Bluetooth pairing method\*:

The phone turns on Bluetooth pairing, searches for and selects "SMSL BT5.0A". If the phone displays "Connected", the pairing is successful. If the pairing isn't successful, please refer to the Bluetooth clear function on page 8. After clearing the Bluetooth device connected to the SA300, please try again!

### Speaker output\*\*:

Please pay attention to the polarity when connecting the speakers, it must follow the mark on the unit, to avoid any effect to the sound quality.

## Display Interface and Instructions

### Instructions

#### BUTTON

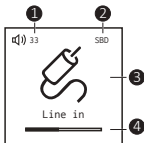
Power button: Short press to turn on the power, then short press to turn off the power.

Input selection button: Every time you press , the input will switche between Bluetooth, LINE IN, USB.

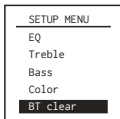
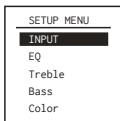
**KNOB:** Press to enter the menu, rotate left and right to select

Outside the menu : Volume control

In the menu : Switch of menu items



- ❶ Digital volume indicator
- ❷ Sound indication
- ❸ Input selection indication
- ❹ Volume display indication



**There are 6 pages of settings in this menu.**

- INPUT
- EQ
- Treble
- Bass
- Color
- BT Clear

## INPUT SETTING

Bluetooth

USB

Line in

Input menu:

- Bluetooth
- USB
- Line in

## EQ SETTING

Direct

Tone

SDB

Bass

Super Bass

EQ setup menu:

- Direct
- Tone
- SDB
- Bass
- Super Bass
- Rock
- Soft
- Clear

## BT SETTING

Bass

Super Bass

Rock

Soft

Clear

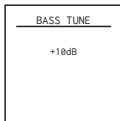
## TREBLE TUNE

+10dB

**Treble adjustment range:** -10dB~+10dB

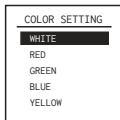
Note: When the EQ mode is Direct or other EQ mode, changing the Treble will change the EQ to Tone mode.





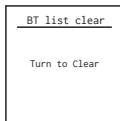
**Bass adjustment range:** -10dB~+10dB

Note: When the EQ mode is Direct or other EQ mode, changing the Bass will change the EQ to Tone mode.



**Color Setting:**

- WHITE
- RED
- GREEN
- BLUE
- YELLOW



**BT Clear menu:**

- BT Cleared ! (The paired device was cleared!)
- Turn To Clear  
(Rotate the "knob" or press the "up" or "down" buttons of the remote control to clear paired device.)

**Note:**

If the current input is not Bluetooth, this setting is invalid, it will show "It's not BT!"

## Factory Reset

Connect the power cord when pressing the power button, until the screen shows logo.

## Warranty Terms

### 1.The Term of Service

Foshan Shuangmusanlin Technology Co., Ltd promises to offer good-quality products. If the product is broken in 7 days after purchasing when you use it normally, you can choose to send it back for return, replacement or repairing (only the product does not affect the second sales can be returned ). Repairing for free in one year if you use it normally.

2.Date of purchase is in accordance with the date on invoice or receipt used by seller, and if you buy it on line, you can show the screenshot of trade.

3.If an inappropriate usage causes the unit damaged, the warranty will be void. As below.

- All damages by inappropriate use, including using it under non-normal working environment or without following the instructions.
- Dismantling, refitting, repairing by user in private.
- Causing damage by using some fittings instead of the designative or accredited ones.
- Cannot provide credible proof of purchase.

4.Sending it back to our company for repairing.

5.Contact your S.M.S.L Audio reseller for a return or replacement.