



CONCERT GRAND SERIES



Reference



The Power and the Glory



The Ultimate.

We love crafting loudspeakers. We always know that every piece will arrive at your home according to our latest highest standard of technology and performance abilities. For ALL kinds of music, no matter what your musical preferences are.

We don't believe in changes just for the sake of changing. When our founder and designer Peter Gansterer creates a new speaker line, there is always a pioneering and profound technical reason for it.

First there is the vision. Then there is the exploring of options how to realize the idea. Then the realizing of technical feasibilities and their sorting out.

And then there comes the time of listening to the myriad of combinations, as each part has its individual tone colour. Years of it.

And when the new speaker is presented, the inner circle of Vienna Acoustics and friends is listening for the first time and something changes.

It's the moment when a 30 year old jazz record of Tuck & Patti, which you know inside out since decades, brings tears to your eyes, on the strength of the crystal clear, reradiated, natural intensity.

It's the moment when you lose your temper in a drum solo, electrifying the space around you. To the point.

It's the ease and precision the Vienna Philharmonic Orchestra, straight from the Viennese Musikvereinsaal, assemble in your living room for a private audience.

Then you know a new level is reached and we sincerely want to share it with the whole world.

BEETHOVEN Concert Grand REFERENCE™

Our Beethoven Concert Grand Reference™ is a no-compromise loudspeaker, breaking grounds in setting new standards in state-of-the-art music reproduction.

To say only that the design goals for such a speaker were high efficiency, outstanding dynamic range, excellent low bass extension, and ultra-wide bandwidth from a reasonably compact enclosure, misses the larger point. The Beethoven's overriding goal is to produce music on such a completely convincing scale that it will transform the listening room and transport the listener.

At the heart of the design stand our brandnew spidercone drivers, one 6 inch midrange and three 7 inch woofers, all with our patented flat Spidercone within a new construction, consisting of 2 distinct cones – the all new Composite Cone.

The plane surface of the spidercone offers the advantage of precise, piston-like movement.

Any diaphragm should move in and out as one unit, not as a quivering mass of uncorrelated vibrations. It should move as a perfectly-solid piston.

The flat cone is extremely stiff, with bracings of a height of 18 mm (bass) and 14 mm (mid), yet light, respectively, further reinforced by glasfibers in our new X4P™ mixture.

The rearside bracings are constructed in a way that the whole impulse energy is allocated evenly via the whole surface of the flat cone. Every square centimeter delivers the same impulse as its neighbours, which results in revolutionary impulse response control.

As our cone/diaphragm-construction builds upon a very large voice coil, the radiating surface in its middle is large, thereby making it an significant sound determinant. The countless listening testings brought forth such an unexpected unique combination the we gave it a new name, the Composite Cone. The 5cm area is now an inverted dome made of woven fabric, double-coated on its rearside. Perfection was achieved by listening to various axial positions, with extraordinary homogenous results by employing a recessing of 8mm.

The sum total of the features of the Composite Cone is a peerless symbiosis.

Furthermore, one of the reasons why the woven fabric center cone interacts so nicely, is its affinity to the fabric material of our highly musical, hand-coated silk dome tweeter, designed by Vienna Acoustics, hand-crafted by a Scandinavian team of specialists.

This 1.1 inch tweeter is capable of revealing even the finest nuances in a most natural way, while imparting no stridency at all of its own, and consummately extend well down into the midrange spectrum.

The crossover circuitry possesses both, the elegant simplicity of soft filters - pure first-order, 6 dB per octave slopes to Bessel second order - and the essential complexity resulting from listening, needed to weave dexterously the drivers' output into a cohesive system. All decisions concerning individual components and the layout of the circuitry were as always made through extensive listening tests. Specially selecting each component results in a harmonious musicality, while a sophisticated layout helps in clarifying instrumental timbres.



The cabinet is an example of the most advanced European joinery technology available. Not apparent to the eye is the artfully articulated bracing structure, as well as the carefully chosen separate enclosures for the individual drivers. What is apparent to the eye is the warmth of the handselected veneers, gently eased at the edges with our veneer wrapping technique, and the depth and pureness of the true piano lacquer.

Great engineering demands the angularity; great design achieves an artful form that confers quality and substance.

The sinuous fusion of art and technology allows Beethoven Concert Grand Reference™ to amaze aesthetically and perform incomprehensibly in any living space. All of the passionately designed features combine to create the most exceptional characteristic of our new Grand Series Beethoven: the ability to bring the unleashed emotion of music to your home.

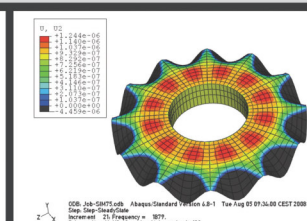
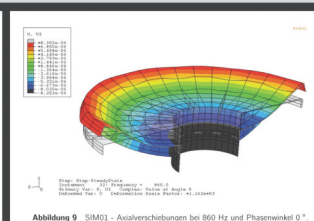
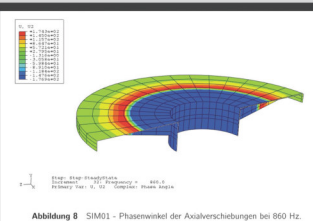
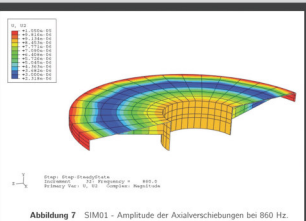
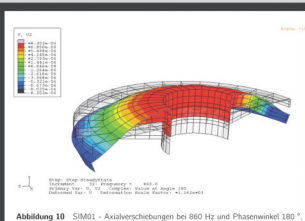


Vienna
acoustics



Technical Data:

Impedance	4 Ohms
Frequency Response	28-23000 Hz
Sensitivity	90 dB
Recommended Amplifiers	50 - 400 Watts
Drive Units	
7" Woofer (3)	Composite Cone: Flat X4P Spidercone with recessed fabric center-cone
6" Midrange	Composite Cone: Flat X4P Spidercone with recessed fabric center-cone
Tweeter	1.1" Hand Coated Vienna Acoustics Silk Dome
Bass System	Bass Reflex
Bass Function	Impulse Optimizing QB 3 (Quasi-Butterworth)
Crossover Components	Polypropylene Capacitors, 1% tolerance Coils 0,7% tolerance, Midrange/Tweeter Section Air Coils, Special Powder Core for Bass Section Metal Film Resistors 1% tol., Inductance Free
Crossover Function	3-way, 6 dB and 12 dB Bessel
Weight per Pair	75 kg / 165 lbs
Dimension (W x H x D) inches	8,1 x 44,5 x 15 (without base assembly) 12,1 x 46,9 x 15 (with base assembly)
Dimension (W x H x D) mm	205 x 1130 x 380 mm (without base assembly) 307 x 1191 x 380 mm (with base assembly)
Finishes	Premium Rosewood, Cherry, Piano Black, Piano White



BEETHOVEN Baby Grand REFERENCE™



The Revelation of the Unexpected.

Listening for the first time to our new BEETHOVEN Baby Grand REFERENCE™ leaves you breathless with a few burning questions: How on earth is this slim beauty able to create such a soundstage? Where is the hidden subwoofer? And where does this intensity come from?

At the heart of the design stand our brandnew spidercone drivers, one 6 inch midrange and two 6 inch woofers, all with our patented flat spidercone within a new construction, consisting of 2 distinct cones – the all new Composite Cone.

The plane surface of the spidercone offers the advantage of precise, piston-like movement. Any diaphragm should move in and out as one unit, not as a quivering mass of uncorrelated vibrations. It should move as a perfectly-solid piston.

The flat cone is extremely stiff, with bracings of a height of 18 mm (bass) and 14 mm (mid), yet light, respectively, further reinforced by glasfibers in our new X4P™ mixture.

The rearside bracings are constructed in a way that the whole impulse energy is allocated evenly via the whole surface of the flat cone. Every square centimeter delivers the same impulse as its neighbours, which results in revolutionary impulse response control.

As our cone/diaphragm-construction builds upon a very large voice coil, the radiating surface in its middle is large, thereby making it an significant sound determinant. The countless listening testings brought forth such an unexpected unique combination the we gave it a new name, the Composite Cone.

The 5 cm area is now an inverted dome made of woven fabric, double-coated on its rearside. Perfection was achieved by listening to various axial positions, with extraordinary homogenous results by employing a recessing of 8mm.

The sum total of the features of the Composite Cone is a peerless symbiosis. Furthermore, one of the reasons why the woven fabric center cone interacts so nicely, is its affinity to the fabric material of our highly musical, hand-coated silk dome tweeter, designed by Vienna Acoustics, hand-crafted by a Scandinavian team of specialists.

Like its grander companion, BEETHOVEN Baby Grand REFERENCE™ features our new, exclusive handcoated silkdome tweeter, which reveals even the slightest nuances with natural ease, while extending well down into the midrange regions.

The result of this carefully chosen combination creates a milestone in terms of naturalness, clarity and ease of reproduction.

The crossover circuitry possesses both, the elegant simplicity of soft filters - pure first-order, 6 dB per octave slopes to Bessel second order - and the essential complexity resulting from listening, needed to weave dexterously the drivers' output into a cohesive system.

All decisions concerning individual components and the layout of the circuitry were as always made through extensive listening tests. Specially selecting each component results in a harmonious musicality, while a sophisticated layout helps in clarifying instrumental timbres.

The tradition of unrivaled finish quality continues with BEETHOVEN Baby Grand REFERENCE™, providing the warmth and beauty of real wood, as well as the highest standards in true piano lacquer finish.

Not apparent to the eye, but all the more important to complete the homogenous whole, is the scientifically balanced bracing structure, as well as the absolutely airtight separate enclosure for the Composite Cone midrange driver.

Extensive listening comparisons and tests by our founder and designer Peter Gansterer constitute the core of the crossover's sophisticated layout and result in incomparably musical harmony and power, instantly apparent when turning on this outstanding speaker.

Reveal the unexpected and lose yourself in the beauty of music.



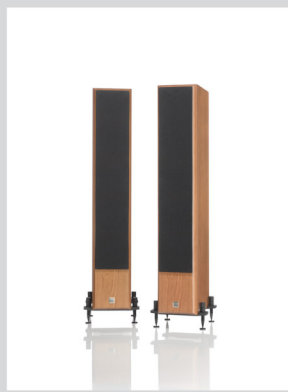


Technical Data:

Impedance	4 Ohms
Frequency Response	33–23000 Hz
Sensitivity	89 dB
Recommended Amplifiers	40 – 300 Watts
Drive Units	
6" Woofer (2)	Composite Cone: Flat X4P Spidercone with recessed fabric center-cone
6" Midrange	Composite Cone: Flat X4P Spidercone with recessed fabric center-cone
Tweeter	1.1" Hand Coated Vienna Acoustics Silk Dome
Bass System	Bass Reflex
Bass Function	Impulse Optimizing QB 3 (Quasi-Butterworth)
Crossover Components	Polypropylene Capacitors, 1% tolerance Coils 0,7% tolerance, Midrange/Tweeter Section Air Coils, Special Powder Core for Bass Section Metal Film Resistors 1% tol., Inductance Free
Crossover Function	3-way, 6 dB and 12 dB Bessel
Weight per Pair	52 kg / 115 lbs
Dimension (W x H x D) inches	7,2 x 40,4 x 13,1 (without base assembly) 10,2 x 43,1 x 13,1 (with base assembly)
Dimension (W x H x D) mm	182 x 1025 x 330 mm (without base assembly) 260 x 1095 x 330 mm (with base assembly)
Finishes	Premium Rosewood, Cherry, Piano Black, Piano White



Vienna
acoustics





for the love of music

Team spirit underlies all of our work at Vienna Acoustics, but when it comes right down to it, we achieve outstanding results because we are passionate. About what? Music, music, and music.

Founded in 1989, Vienna Acoustics has been hand crafting loudspeakers of distinction in Vienna, Austria for over thirty years now.

Today as in the early beginnings, Vienna Acoustics is characterized by founder and chief designer, Peter Gansterer.

A great loudspeaker is a synthesis of the arts. It's an organic whole, whose sound derives from the harmony of countless sound-determinating parameters in combination, mirroring the composition of the truly harmonic high-end system of which it is a vital component.

Peter Gansterer understands this like no one else. Peter is a passionate devotee of music and its reproduction who came of age in Vienna, Austria, where he studied acoustical engineering.

Through his studies of the great concert halls of Vienna, Peter came to understand the dynamics of live music and, in a unique case of reverse engineering, develops loudspeaker designs that uncannily reproduce that experience.

Successfully combining the individual characteristics of a loudspeaker's many parts, the heart of design work, is a task of such complexity that it falls into the realm of an art: it's like crafting, tuning, and balancing a fine musical instrument. Only a very few people are gifted with such a talent.

Over the years, Vienna Acoustics speakers have secured a commanding place in the world market.

Our motto is team spirit, but the complex art of design falls to one exceptionally talented man.

The Music Company.

Long-term strategy, modesty and our visionary thinking, durable core team enable the sustainable certitude of our stable, independent company, celebrating in 2019 its anniversary of 30 years!

Combined with the strong emotional attachment to our creations, as well as our constant astonishment about what music can achieve, here we are today, announcing the release of our latest creations.

BEETHOVEN Concert Grand REFERENCE™
BEETHOVEN Baby Grand REFERENCE™

Out now!

